 **entra**

In collaboration with:

 **SPACES.**

 **MAD**


 **in senti**


**FUTURE  
BUILT**

**RESIROEL** 



**RAMBOLL**

Norconsult 

 **asplan viak**

 **H&T**  
HEIBERG & TVETER  
RÅDGIVENDE ING. ELEKTRO

 **HAANDVERKERNE**

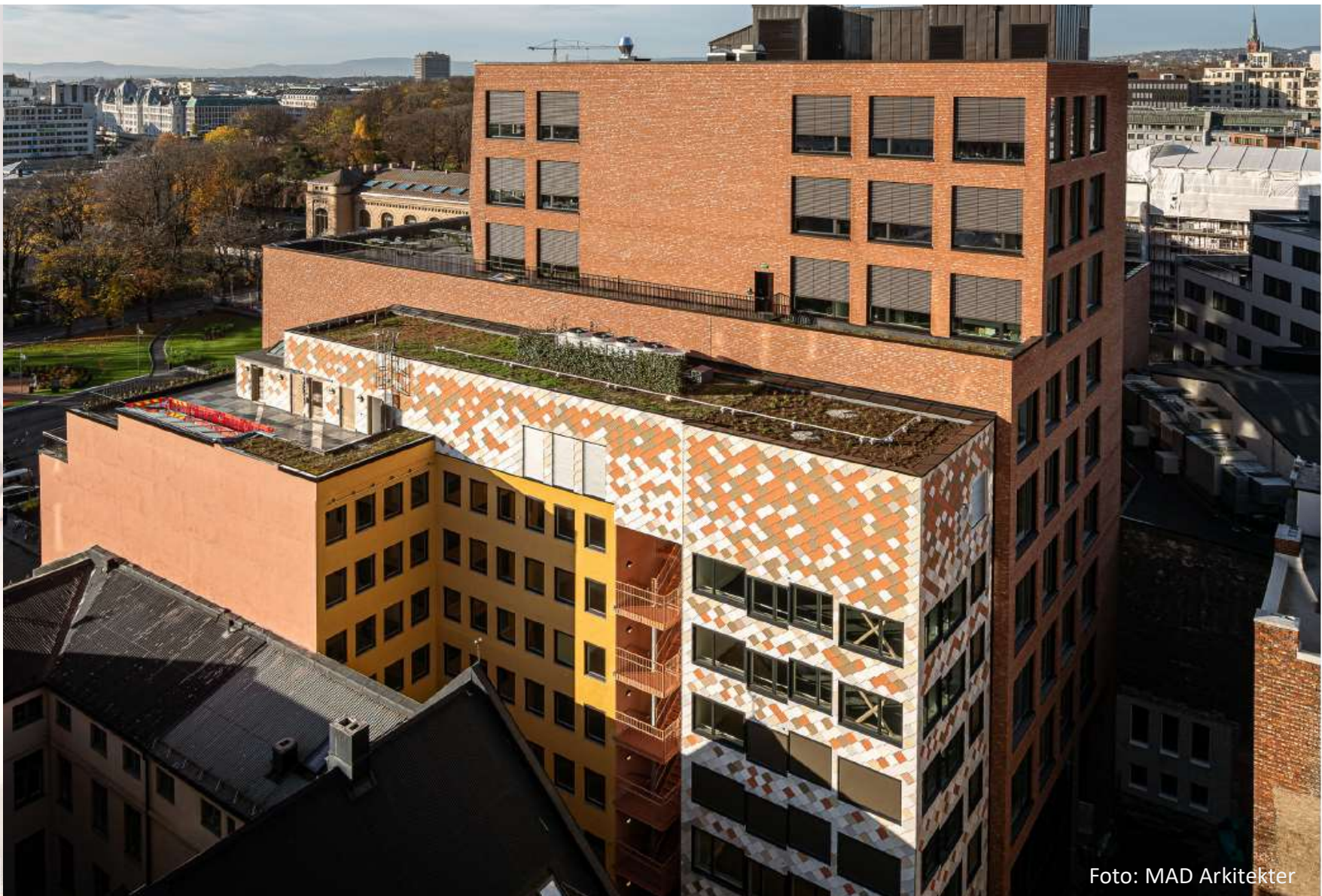


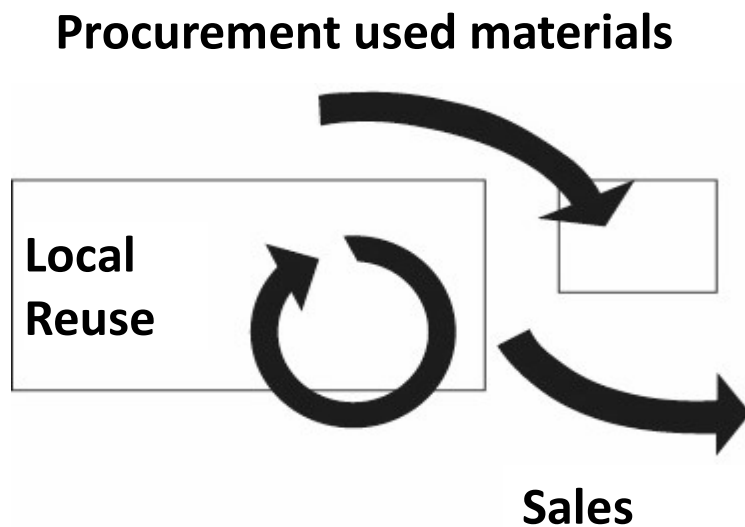
Foto: MAD Arkitekter



# Ambitions for the property



# Practical implementation of reuse



- Finding the products
- Control and documentation
- Quality assurance
- Adjustments and (re-)engineering
- Responsibilities and agreements
- Processing/repairs
- Transport and storage
- Assembly and usability

# Donor-buildings



**1 Schweigaardsgate 15 (Entra)**  
Himling  
Elektriske installasjoner



**2 Kristian Augusts gate 23 (Høegh Eiendom)**  
Himling  
Elektrisk installasjoner



**3 St. Olavs plass 5 (Entra)**  
Kjøkkeninnredn.  
Fast innredning  
Belysning  
Vinduer  
Dører



**4 Universitetsgata 2 (Entra)**  
Foldevegger  
Ventilasjonskanaler  
Trapp  
Glasfelt  
Himling  
Radiator  
Sanitær  
Skilt og tavler  
Sprinkler



**5 Regjeringskvartalet R4 (Statsbygg)**  
Bærende hulldekker



**6 Akerselva Atrium**  
Gulvoverflate



**7 Dronning Eufemiasgate 8 (Braathen eiendom)**  
Komfortkjøling  
Rekkverk  
Belysning  
Glassfasader  
Gulvoverflate  
Sanitær  
Brannrelange-  
skap  
Innvendig kledning  
Innder



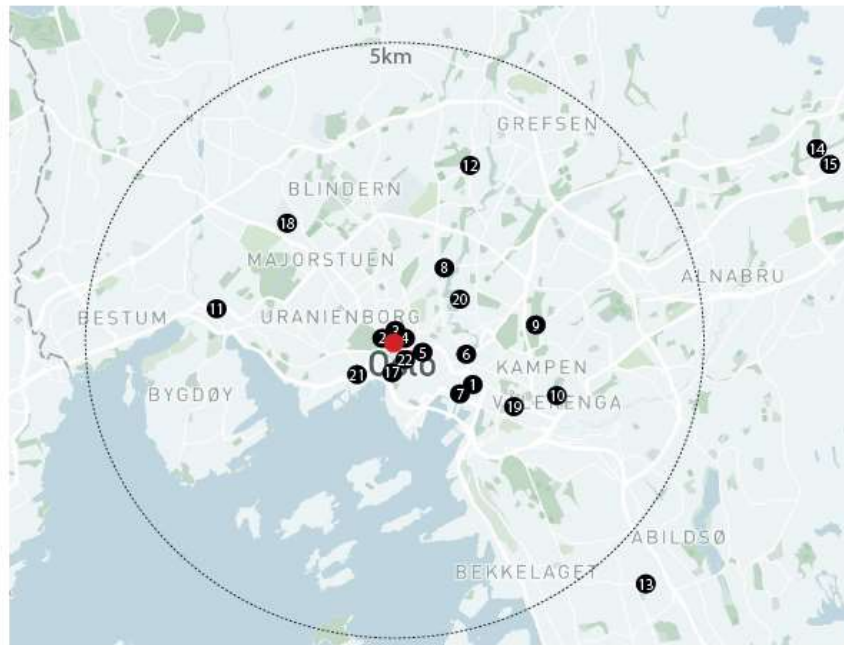
**8 Darres gate 2**  
Teglstein



**9 Kristians Augusts gate 13 (Entra)**

Ekisterende bygg

Radiator  
Elektrisk installasjoner  
Luftfordeling  
Ventilasjon  
Kjøkkeninnredning  
Dører  
Innvendige innredninger



**16 Bedriftsveien 7**  
Teglstein



**18 Oppsalhjemmet (Omsorgsbygg - OBY)**  
Utvendig kledning og overflate



**17 Tordenskjoldsgate 12 (Entra)**  
Sanitærutstyr



**19 Diakonhjemmet sykehus (Diakonhjemmet eiendom)**  
auditoriestoler



**15 Turbinveien 15**  
Vinduer



**20 Nordregate 20-22**  
Vinduer



**11 Dronning Maudsgate 1-3 (Pecunia)**  
Stål



**21 Karl Johansgate 33**  
Stål



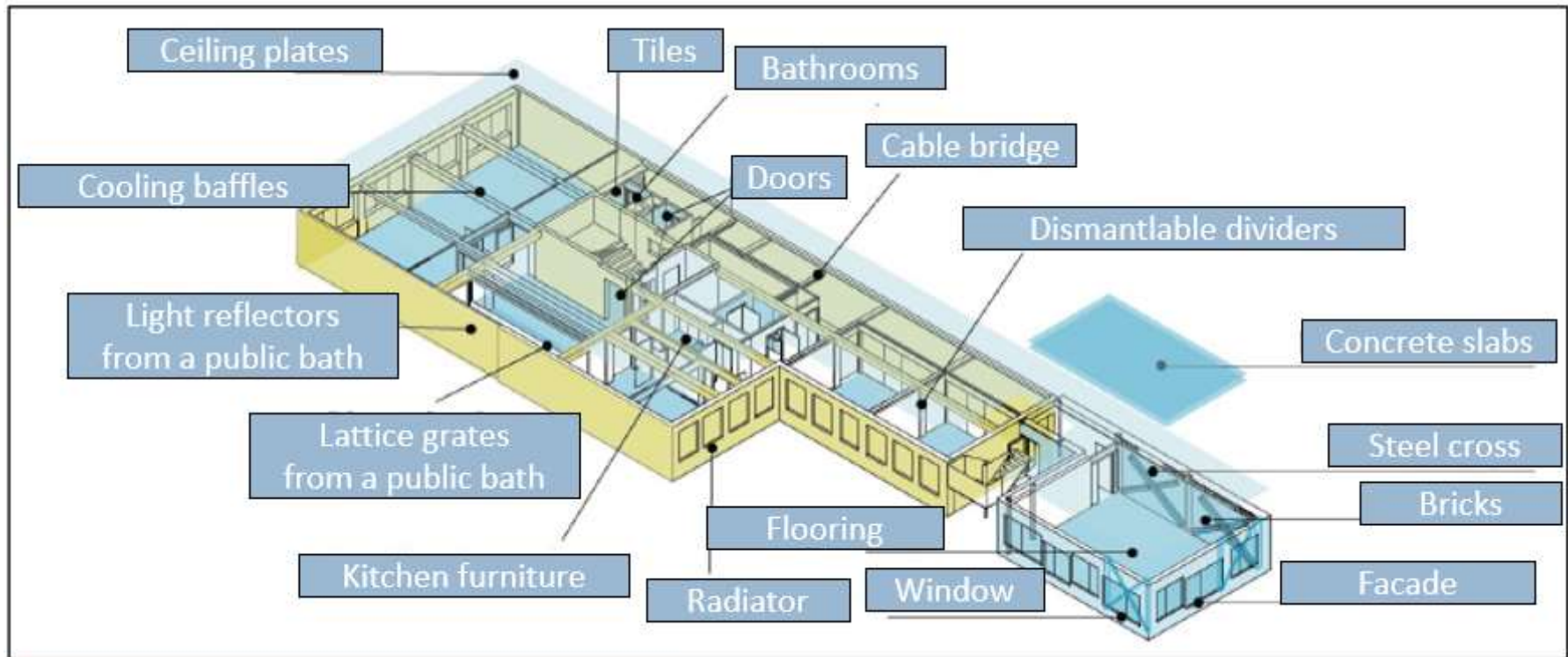
# Reuse of steel, concrete slabs and bricks



# Reuse of cooling baffles, facade and 100 different tiles



# Reuse for a typical floor



Typical floor with reuse of building materials. Illustration :Mad Architects