

# DAGUR GRÆNNI BYGGÐAR

Hvatar frá ólíkum sjónarhornum sem stuðla að grænni byggð

September 2021

**2010**

**„Eigum við framtíð“**

**NEI**



NATURAL HISTORY MUSEUM

© The Trustees of the Natural History Museum, London

A low-angle photograph of the Natural History Museum in London, showing its grand Gothic Revival architecture with two prominent towers and a central entrance. The building is made of light-colored stone and features intricate carvings and large arched windows. A flagpole with the Union Jack is positioned between the towers. The sky is a clear, pale blue with some light clouds. The year '2017' is overlaid in white text in the center of the image.

2017

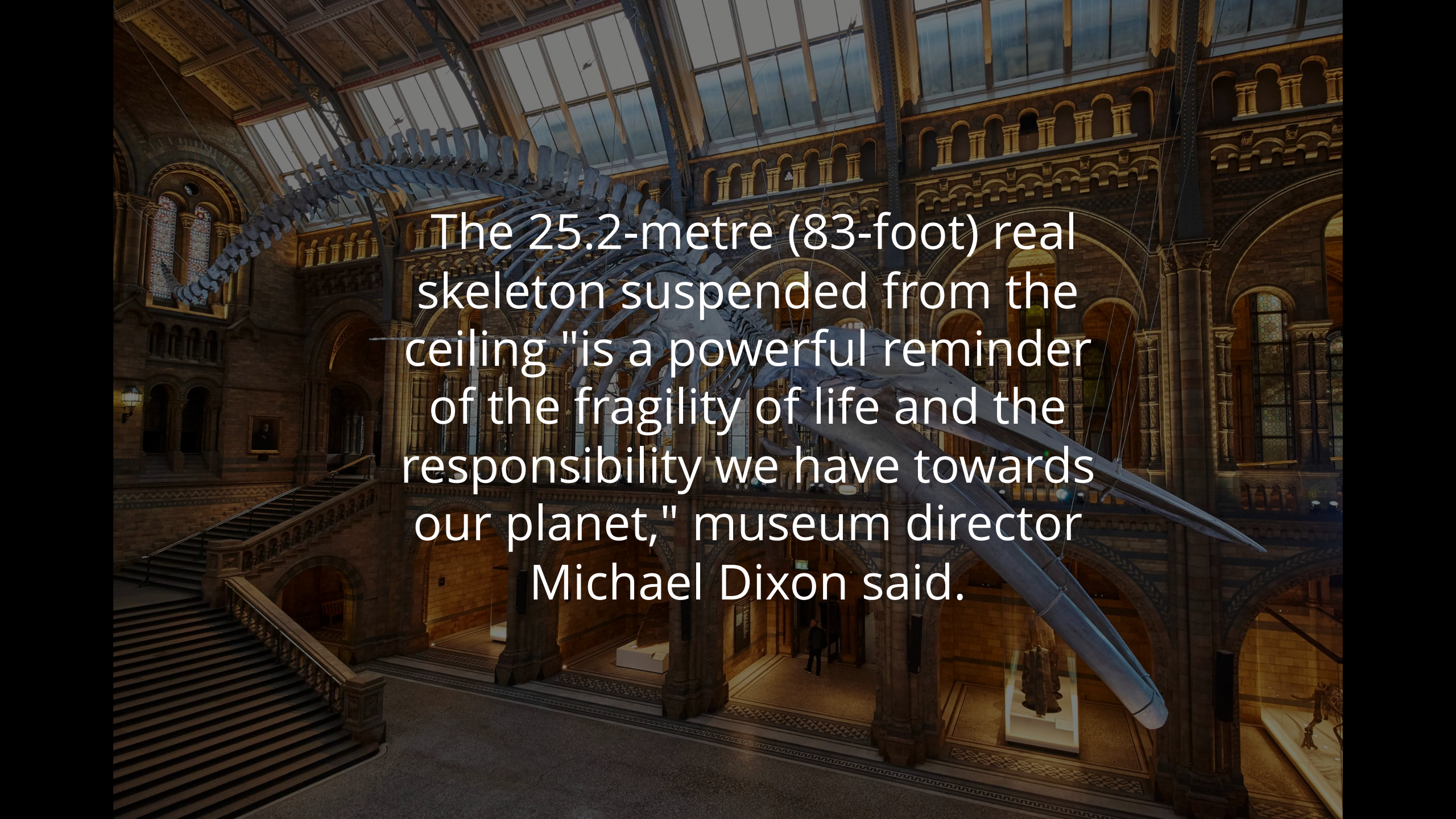
NATURAL HISTORY MUSEUM

© The Trustees of the Natural History Museum, London







A large blue whale skeleton is suspended from the ceiling of a grand, ornate museum hall. The skeleton is the central focus, stretching across the width of the hall. The architecture features high ceilings with large windows, arched doorways, and a prominent staircase on the left. The lighting is warm and dramatic, highlighting the scale of the specimen.

The 25.2-metre (83-foot) real skeleton suspended from the ceiling "is a powerful reminder of the fragility of life and the responsibility we have towards our planet," museum director Michael Dixon said.





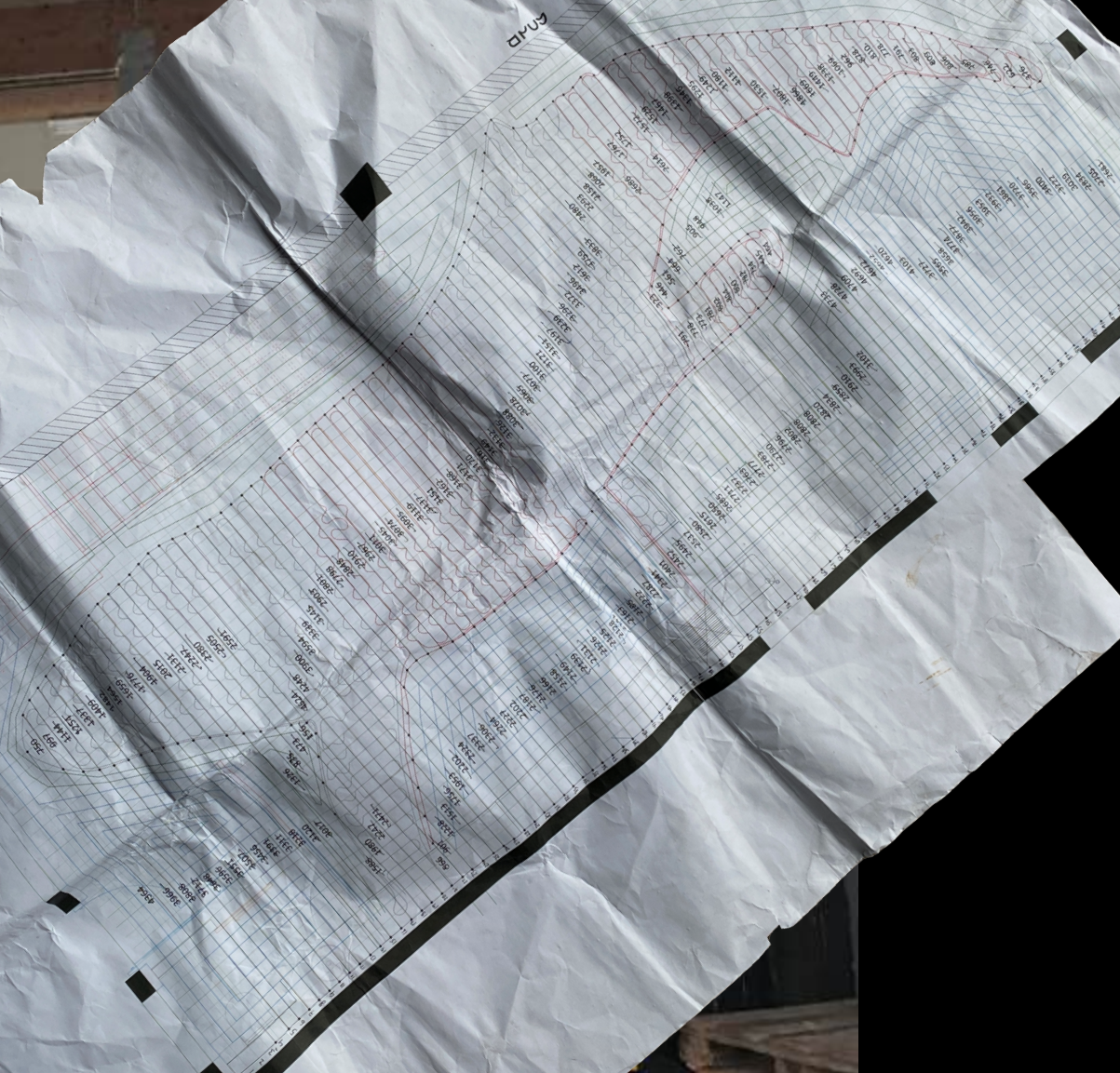
2017





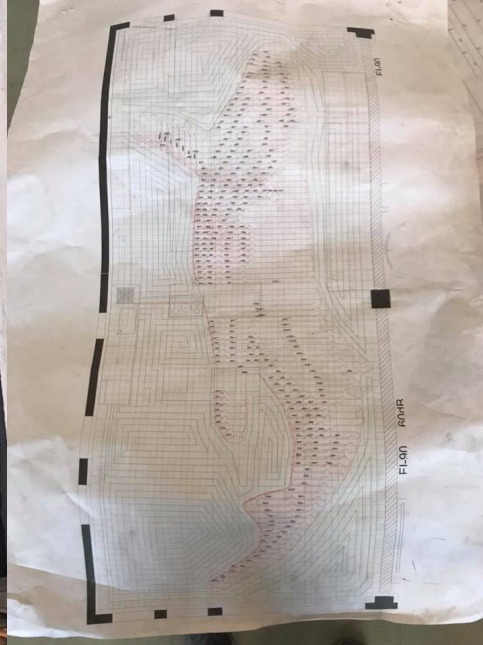
FLOOR PLAN

FLOOR PLAN













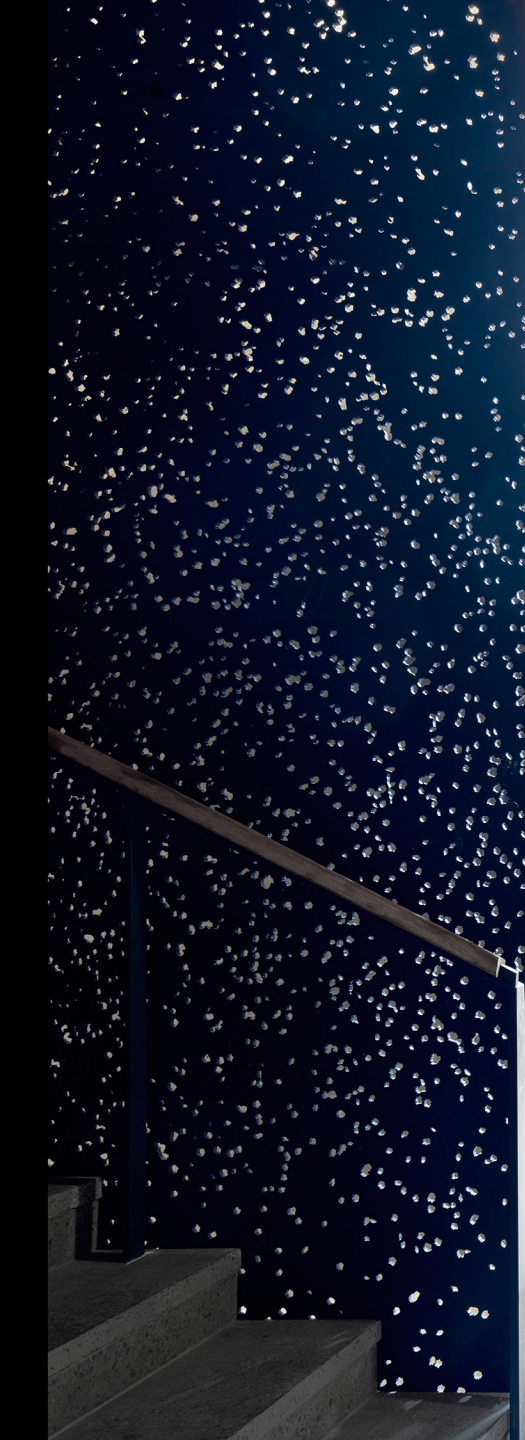






















**“HERE, A MAN, AN  
AMPOULED STRAND,  
DISCOVERS HE HAS 10  
HAPPY TOES”**

François Simon























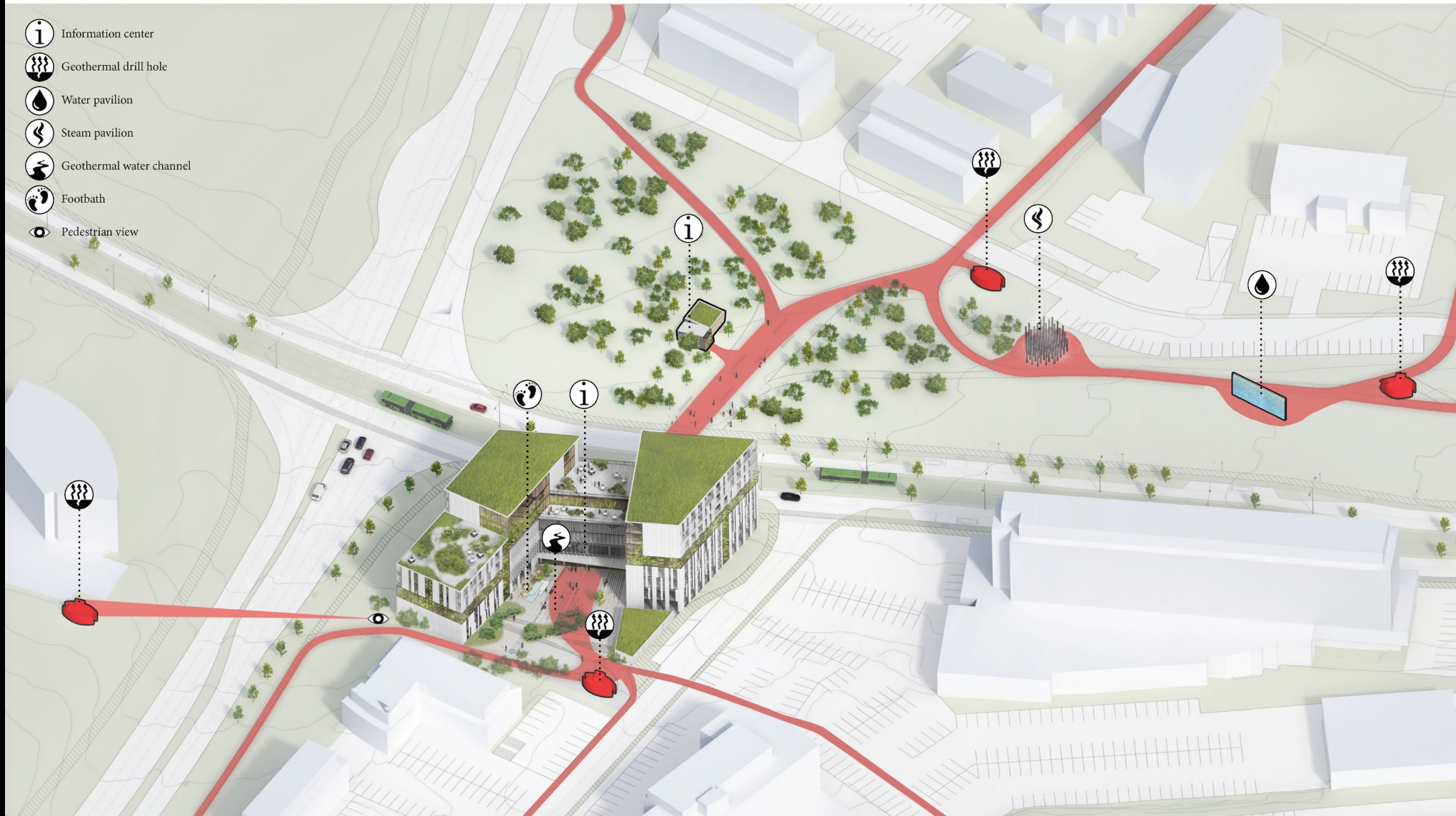




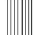













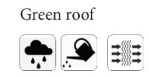
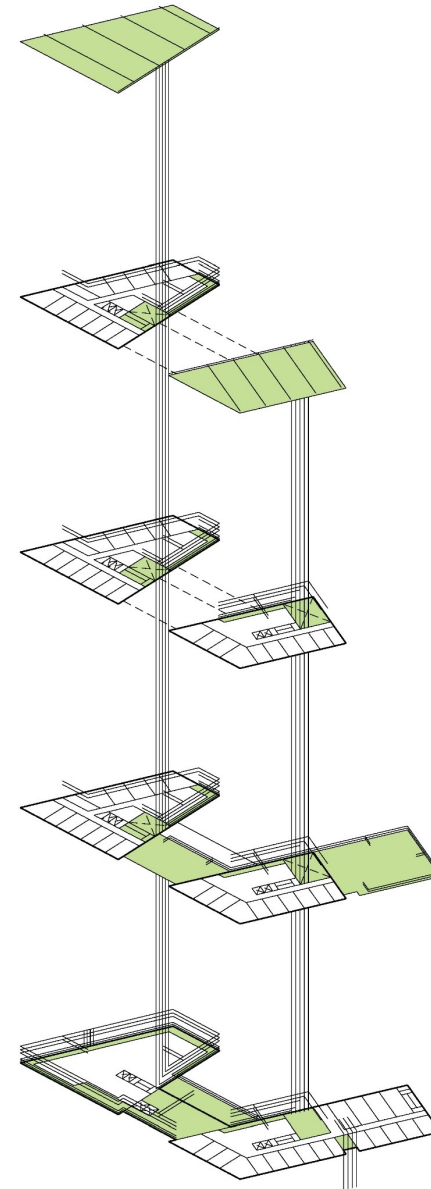
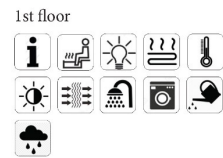
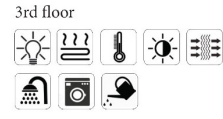
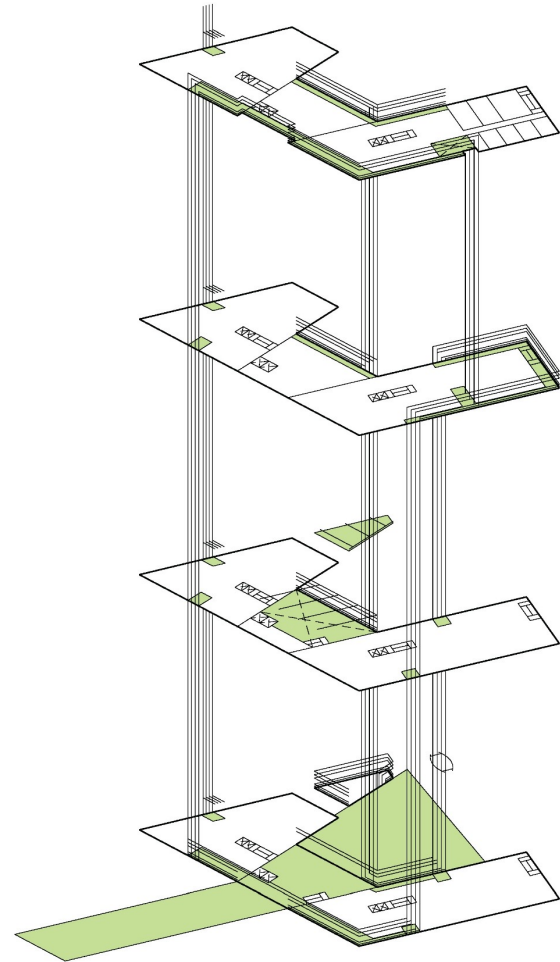
# Geothermal Park

-  Information center
-  Geothermal drill hole
-  Water pavilion
-  Steam pavilion
-  Geothermal water channel
-  Footbath
-  Pedestrian view



# Geothermal integration strategies

-  Geothermal water pipes
-  Information
-  Geothermal energy
-  Recreation activities
-  Solar filtration
-  Air filtration
-  Geothermal heating
-  Cooling
-  Hot water supply
-  Home appliances
-  Irrigation
-  Rainwater management

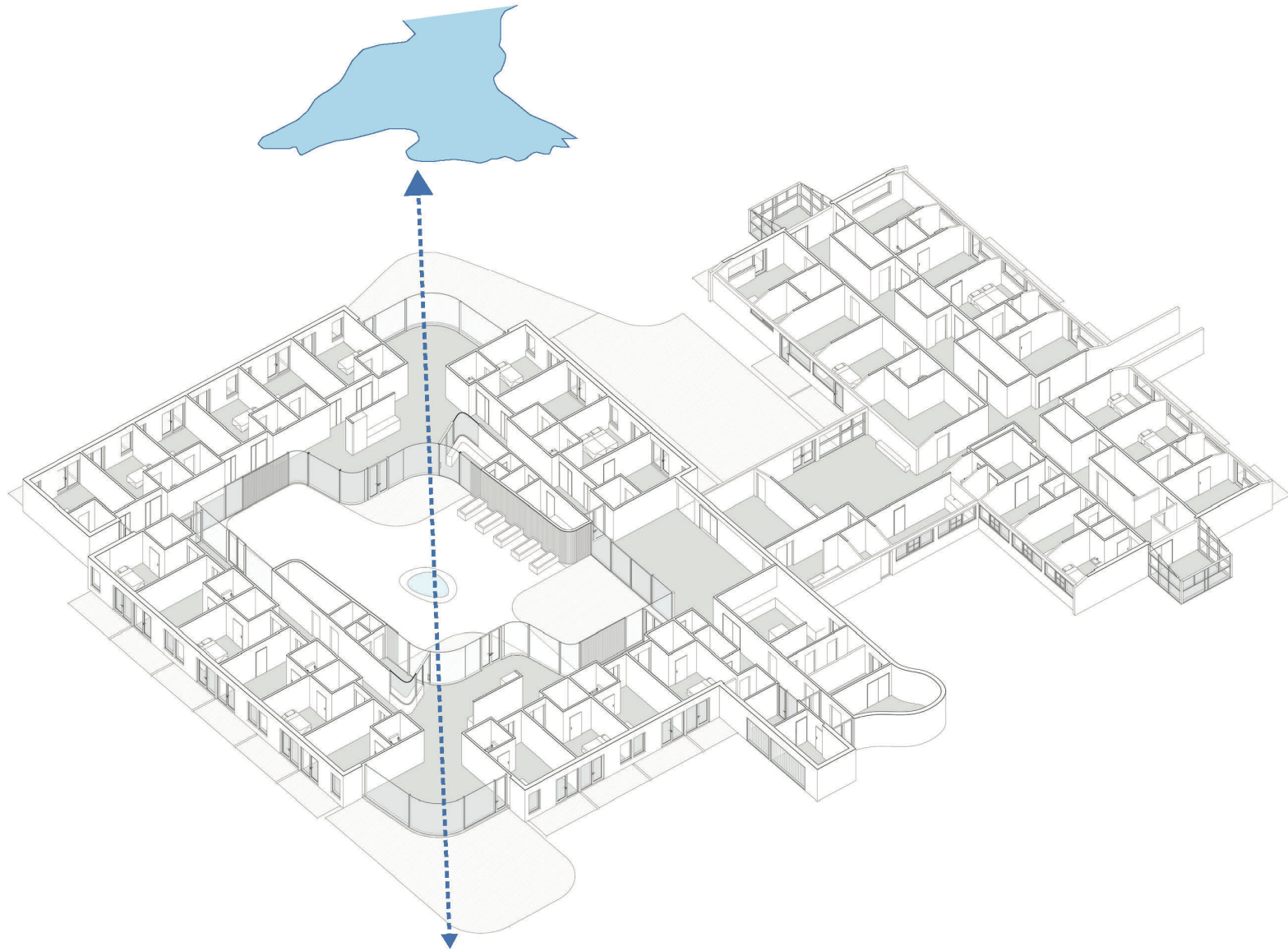


...



2019







Mæla

Lengd Svæði Hreinsa

KORTMYND

- Eignamörk LM
- Jarðeigar á Þeykjanesi
- Skámyndir
- Vefmyndaveilar
- Ýmsar kortagögn

Ymsar kortasjar

Jarðskjálftavirki

0 0 24t Viku

Teikna

Punktur Lína Svæði Texti Breyta Hreinsa

Stærð Litur

5 Svartur Cripa 1



Mæla

Lengd Svæði Hreinsa

KORTMYND

- Eignarnörk LM
- Jarðeldar á Reykjanesi
- Skámyndir
- Vefmyndavélar
- Ýmis kortagögn
- Ýmsar kortasjár
- Jarðskjálftavirki

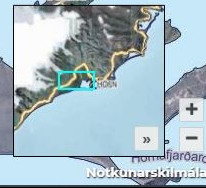
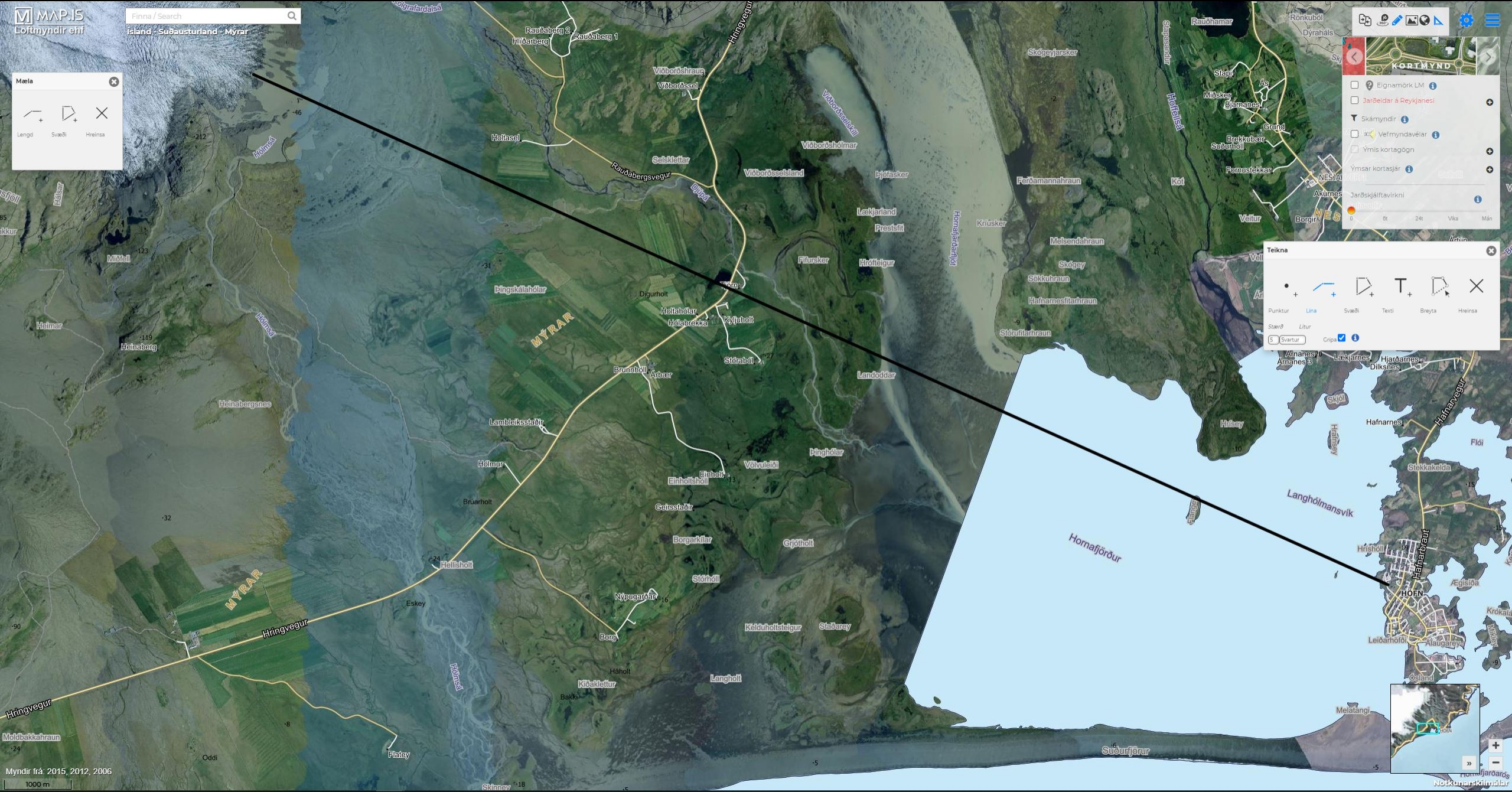
0 0 24t Vika Mán

Teikna

Punktur Lína Svæði Texti Breyta Hreinsa

Stærð Litur

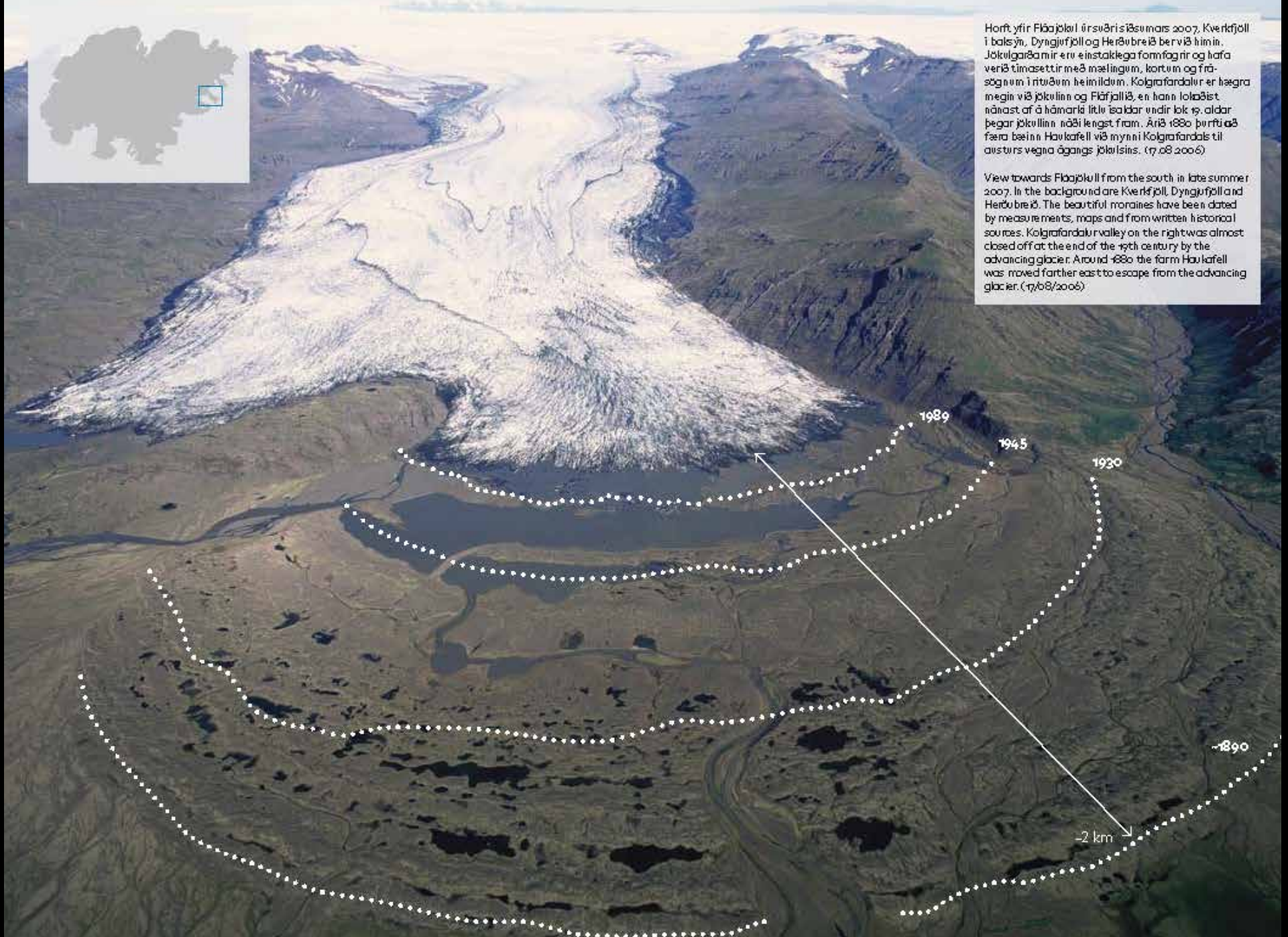
5 Svartur





Horft yfir Fláajökul úrsværisíðum mars 2007. Kverkfjöll í baksýn, Dyngjufjöll og Herðubreið berast þar á milli. Jökulgarðarnir eru einstaklega formfagnir og hafa verið tímasettir með mælingum, kortum og frá-sögnum í ritum heimildum. Kolgrafardalur er hægra megin við jökullinn og Fláajökul, en hann lokaðist nánast af á hámarki litlu ísaldar um 19. öldar þegar jökullinn náði lengst fram. Árið 1880 þurfti að færa bæinn Haukafell við mynni Kolgrafardals til austurs vegna ágangs jökulsins. (17/08/2006)

View towards Fláajökull from the south in late summer 2007. In the background are Kverkfjöll, Dyngjufjöll and Herðubreið. The beautiful moraines have been dated by measurements, maps and from written historical sources. Kolgrafardalur valley on the right was almost closed off at the end of the 19th century by the advancing glacier. Around 1880 the farm Haukafell was moved farther east to escape from the advancing glacier. (17/08/2006)



Mynd fengin úr:  
Hörfandi jöklar -  
Lifandi kennslustofa í  
Loftslagsbreytingum  
Vatnajökulsþjóðgarður  
2017

Mynd: RAX



An aerial photograph of a volcanic crater. The crater floor is covered in dark, jagged rocks and is partially filled with a greyish, silty lake. In the center of the lake, there are several small, dark islands. The background features a range of mountains, some of which are covered in snow or ice. The sky is overcast with dark, heavy clouds. The overall lighting is dim, giving the scene a somber and desolate appearance.

**2019**

## Bréf til framtíðarinnar

Ok er fyrsti nafnkunni jökullinn til að missa titil sinn.  
Á næstu 200 árum er talið að allir jöklar landsins fari sömu leið.  
Þetta minnismarki er til vitnis um að við vitum  
hvað er að gerast og hvað þarf að gera.  
Aðeins þú veist hvort við gerðum eitthvað.

## A letter to the future

Ok is the first Icelandic glacier to lose its status as a glacier.  
In the next 200 years all our glaciers are expected to follow the same path.  
This monument is to acknowledge that we know  
what is happening and what needs to be done.  
Only you know if we did it.

Ágúst 2019  
415ppm CO<sub>2</sub>

## Bréf til framtíðarinnar

Ok er fyrsti nafakunnur jökullinn til að missa titil sinn.

Á næstu 200 árum er talið að allir jöklar landsins fari sömu leið.

Þetta er einn ismerki er tilvitnis um að við vitum

Aðeins þú veist hvort við gerðum eitthvað.

**„Við verðum að  
gera þetta saman:  
fyrir jöklana, fyrir  
framtíðina og fyrir  
okkur sjálf,“**

Agúst 2011  
415pm CS,

A dark, atmospheric landscape featuring a central pond surrounded by a textured, rocky terrain. In the background, there are snow-capped mountains under a heavy, overcast sky. The overall mood is somber and contemplative.

**„fyrir okkur sjálf“**